



# Measure B

## DeLaveaga Elementary School Campus Update

- △ MASTER PLAN
- △ BUDGET OVERVIEW & SCHEDULE
- △ SITE MEETINGS
- △ COMPLETED PROJECTS
- △ NEW CLASSROOM BUILDING
- △ STANDARD CLASSROOMS



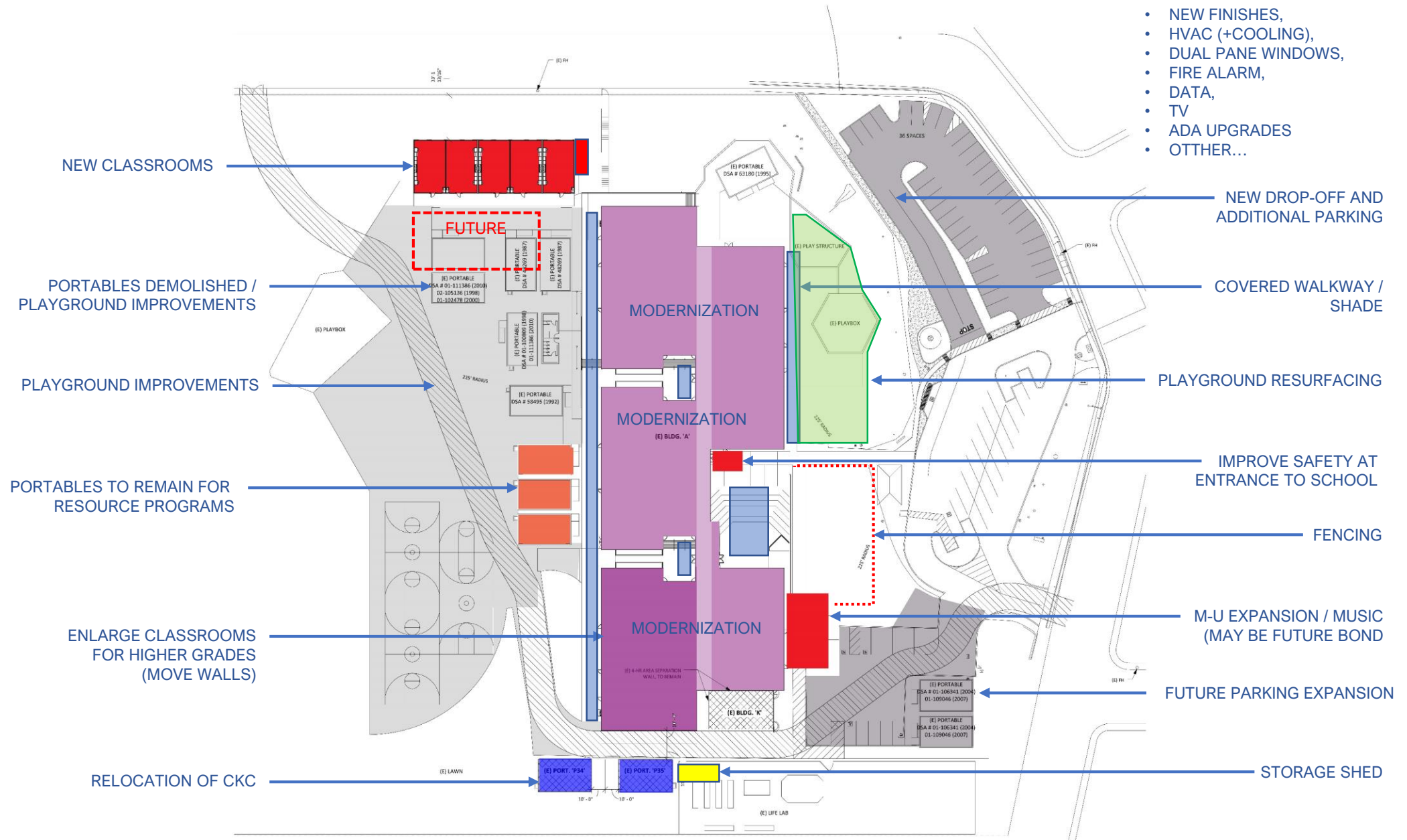
**MADI**  
ARCHITECTS + PLANNERS

**DELAVEAGA**  
ELEMENTARY



**CLASSROOM MODERNIZATION**

- NEW FINISHES,
- HVAC (+COOLING),
- DUAL PANE WINDOWS,
- FIRE ALARM,
- DATA,
- TV
- ADA UPGRADES
- OTTHER...



**VALUE ENGINEERING**

# MADI

ARCHITECTS + PLANNERS

## DELAVEAGA ELEMENTARY



ROOM #	GRADE	TEACHER	NOTES
1	Pre-School	Adriana Lago/Joyce Baster	Preschool Speech/BAT
2	1st	Rebecca Terry	
3	2nd	Patty Travers	
4	1st	Marian Pringle	
5	3rd	Alice Letona	
6	2nd	Lauree Purcell	
7	3rd	Debra Hill Leary	
8	1st	Jennifer Villareal/Kim Hecko	
9	1st	Kim Hecko/Nancy Sagunor	Resource Teacher (4th, 5th, and part of 1st)
10	ES/1st	Miranda Stark/ Kim Tison	Resource Teacher (K, 1st, 2nd, and part of 1st)
11	CNC		Before & After School Care
12	ES/1st	Charlene Tumanut	
13	2nd/3rd	Ben Centano	
14	4th/5th	Holly Butler	
15	4th/5th	Jessie Butler	
16	5th/6th	Jessie Light	
17	4th/5th	Marissa Jimenez	
18	Psychology	Early Zorow	
19	K	Shawna Kates	
20	K	Juan Hernandez	
21	K	Orin Aragon	
22	K/1st	Lani White	
23	ES	Sarah Batta/Charlene Oatley	Response to Intervention Teacher
24	1st	Meghanne Fink/ Alison Buckner	
25			Reading/Intervention/Walk to Read
26	2nd	Melissa Morales MC-Gibben	
27	2nd	Olga Gonzalez/Julie Ryan	
28	3rd	Faith Delgado	
29			Intervention/Reading
30	Art	Jennifer Gunderson	Intervention/Reading/Storage Room
31	Music	Greg Brown	
32	K	Storage/Dance	Dance Room on occasion
33	K	Carney Jung	
34	4th/5th	Henry Michel	
35	4th/5th	Alyssa Cardenas	
	Audio Visual		
	Shared Workrooms		Generally all work rooms are used for small break out spaces, small reading groups, and storage
	WorkRoom (13)		larger space-used for more break out spaces and storage
41		School Counselor	
42		Community Coordinator	
43		Speech Therapist	
44		Small Group Space	used as Library Break out space for small groups
45		Library Storage	
46		Library Office	
47		Library Storage	
48		Storage	Used as Storage during school year
49		Kin Room	

1 SITE PLAN

SCALE: 1" = 30'-0"



SCHOOL DISTRICT



ARCHITECT  
**MADI**  
ARCHITECTURE + PLANNING  
303 POTRERO STREET, SUITE 7B  
SANTA CRUZ, CA 95060  
TEL: 800.725.0571

# DELAVEAGA ELEMENTARY SCHOOL

CAMPUS UTILIZATION PLAN  
DATE: JANUARY 2018

## UTILIZATION

© 2018

	Start	Complete	\$14,861,844
DeLaveaga Elementary School			Project Budget
Multi Project Overhead	7-Nov-16	7-Nov-21	\$743,092
New Shade Structure and Parking Lot	11-Jun-18	24-Aug-18	\$1,600,000
New Classrooms	1-Oct-18	23-Aug-19	\$3,064,347
Reroofing Project	10-Jun-19	23-Aug-19	\$355,439
Modernization Phase 1	10-Jun-19	31-Dec-19	\$3,599,000
Modernization Phase 2	1-Jan-20	21-Aug-20	\$3,599,000
Portable Demolition & Site Work	15-Jun-20	23-Aug-20	\$854,000
Card Access Security System	10-Jun-19	21-Aug-20	\$125,000
Data Infrastructure Improvements	10-Jun-19	21-Aug-20	\$330,000

## PROJECT BUDGETS

**MADI**  
ARCHITECTS + PLANNERS

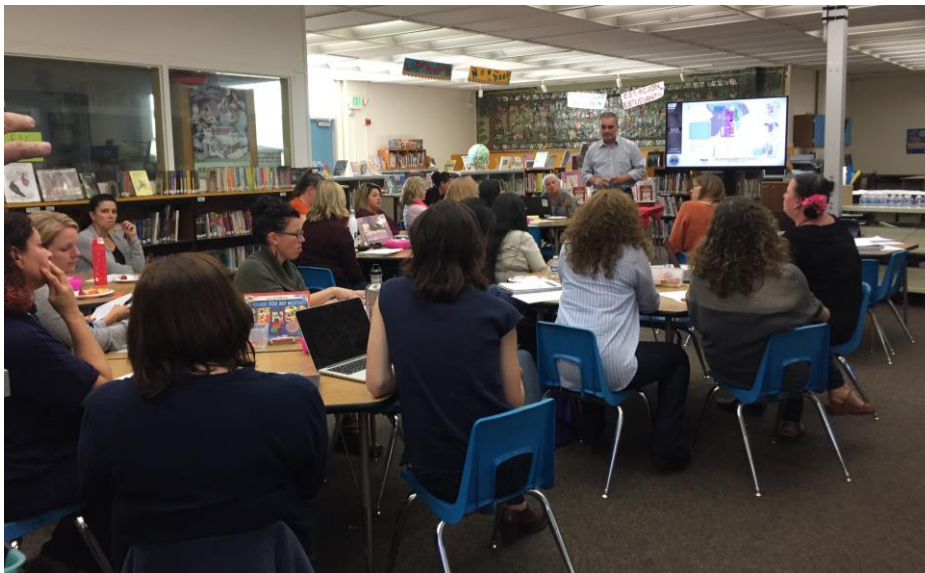
**DELAVEAGA**  
ELEMENTARY





**MADI**

ARCHITECTS + PLANNERS



**DELAVEAGA**

**ELEMENTARY**



## Stakeholder meetings

<u>User Group</u>	<u>Date</u>
Site Masterplanning Meeting	4/20/2017
Site Meeting - Staff (designated)	5/10/2017
Principal Masterplanning	5/25/2018
Staff Meeting	6/5/2017
Principal (Robert Greenlee)	12/14/2017
Utilization Meeting (Robert Greenlee)	1/12/2018
Principal - Master plan (Robert Greenlee)	1/30/2018
Staff & Principal	2/13/2018
School Site Committee	2/14/2018
Librarian	3/14/2018
Site Bond Committee Meeting	5/8/2018
Site Bond Committee Meeting	9/24/2018









FUTURE PORTABLE DEMOLITION AND PLAYGROUND EXPANSION

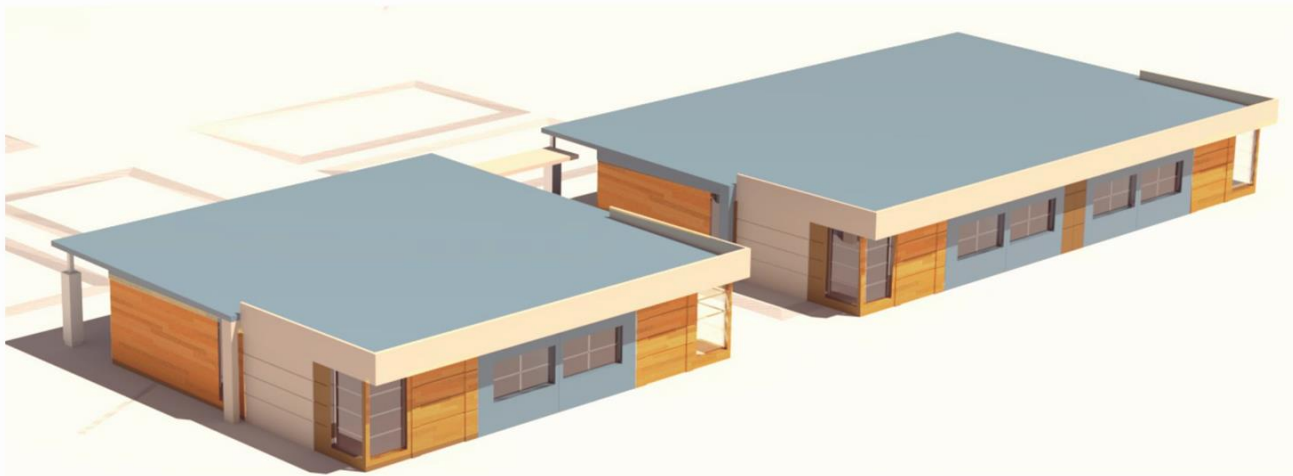




**MADI**  
ARCHITECTS + PLANNERS



**DELAVEAGA**  
ELEMENTARY



**NEW MODULAR CLASSROOM BUILDINGS AT DELAVEAGA ELEMENTARY SCHOOL**



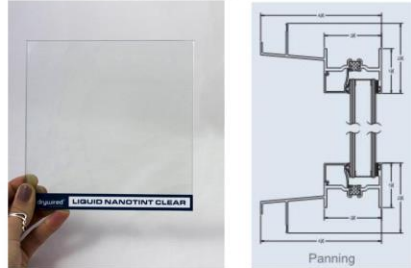
**MADI**

ARCHITECTS + PLANNERS

**DELAVEAGA  
ELEMENTARY**



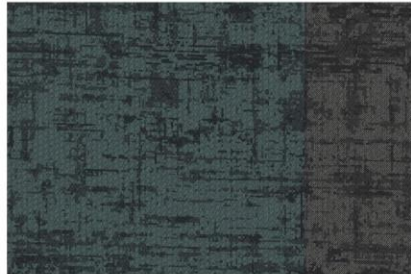
ELECTRONIC LOCKS



WINDOW FILM / NEW WINDOWS



ROLLER BLINDS



CARPET

INTERIOR SAMPLE BOARD

**MADI**  
ARCHITECTURE



TYPICAL EXISTING CLASSROOM: CUT-AWAY SECTIONAL VIEW



TYPICAL EXISTING CLASSROOM: CUT-AWAY PLAN VIEW

ELECTRONIC LOCKS WITH  
REMOTE STAFF READER

16" MIN. MAGNETIC  
WHITE BOARD WIDTH

NEW FURNITURE  
(TO BE SELECTED)

NEW TACKBOARD

NEW CARPET

SOUND AMPLIFICATION  
(OPTIONAL CONSIDERATION)

OPTIONAL DROPDOWN  
SCREEN

HIGH DEFINITION TELEVISION  
ON AN ADJUSTABLE MOUNT

ELECTRIC/DATA WIREMOLD  
(WHERE REQUIRED)

WIRELESS ACCESS POINT  
IN CEILING (WAP)

SOUND AMPLIFICATION  
(OPTIONAL CONSIDERATION)



LINEAR PENDANT LIGHTING



CEILING FAN



ADJUSTABLE TV MOUNT



WIREMOLD

DELAVEAGA ELEMENTARY SCHOOL

MODERNIZATION

SEPTEMBER, 2018



THANK YOU!